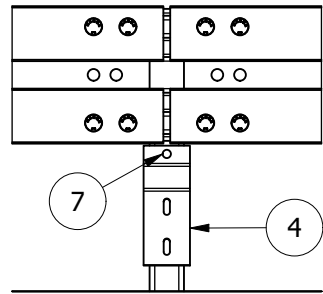
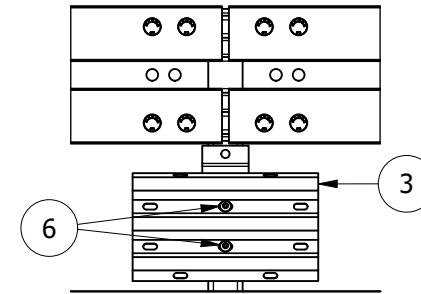
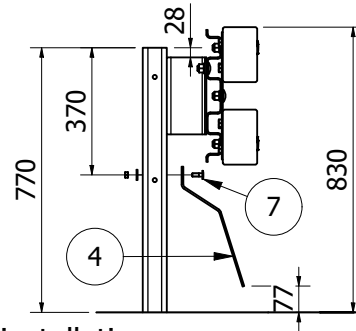


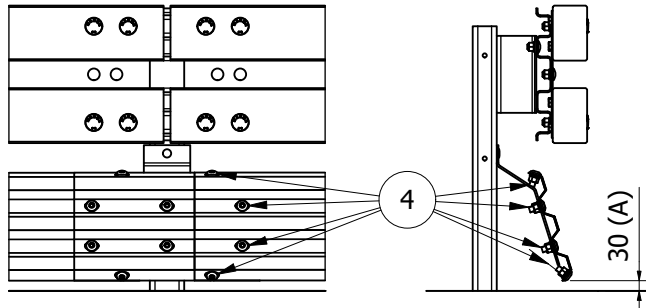
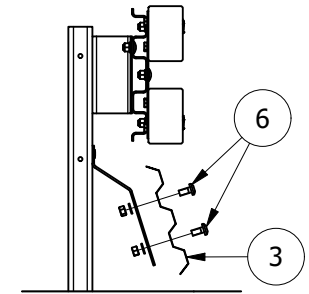
Post cover removal



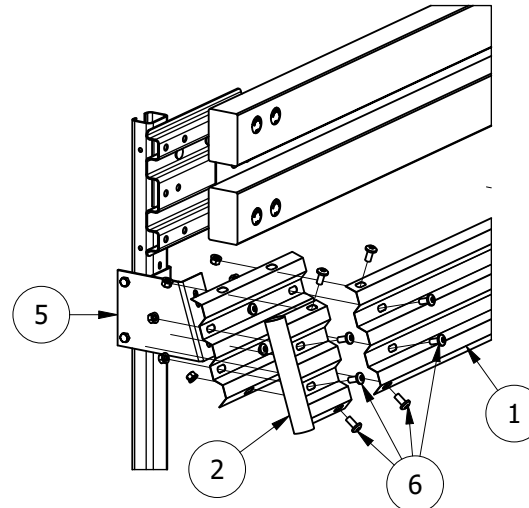
Step "A" - Bracket installation



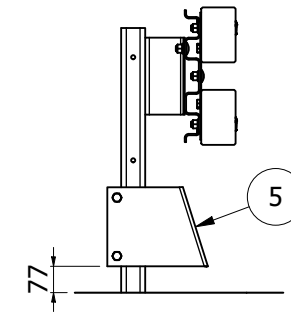
Step "B" - Splice plate installation



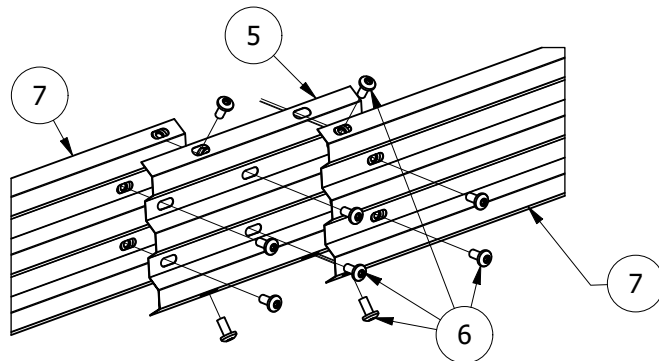
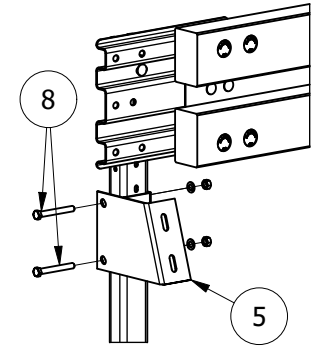
Step "C" - Protection rail installation



Step "D" - Terminal installation



Terminal bracket installation

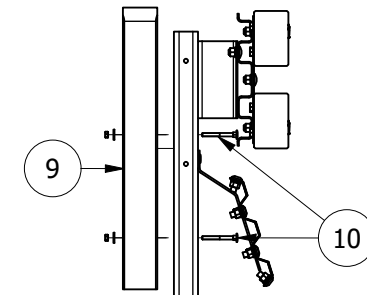


Measurements expressed in mm

Relevant measure: A= ground clearance of the lower edge of the MPS

**Tightening torque:** TT/TE M10x30 class 8.8 - Minimum torque 50 Nm  
 TT M16x35 class 8.8 - Minimum torque 50 Nm  
 TT M16x130 class 8.8 - Minimum torque 50 Nm

| Component list |                              |
|----------------|------------------------------|
| Ref.           | Item                         |
| 1              | Bracket                      |
| 2              | Bolts TTQST M10x30 class 8.8 |
| 3              | End Bracket                  |
| 4              | Bolts TE M16x130 class 8.8   |
| 5              | Corrugated Splice Plate      |
| 6              | Bolts TT M16x35 class 8.8    |
| 7              | Protection rail L= 1840 mm   |
| 8              | Terminal                     |
| 9              | Single rear post cover       |
| 10             | Bolts TTQST M10x100          |



Post cover assembly



**MARGARITELLI**  
**ROAD SAFETY**

|                         |                      |
|-------------------------|----------------------|
| Drawing<br>IM 002-01 RP | Issued<br>07/07/2023 |
| Review<br>00            | Date<br>--/--/----   |

Object: Road Side Safety Barrier H2BL-01  
 Certificate of Costancy of Performance CE n° 0497/CPR/3154  
 with continuous motorcyclist protection system RiderPro-MRS-02  
 Assembly instructions