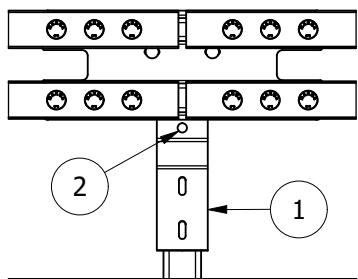
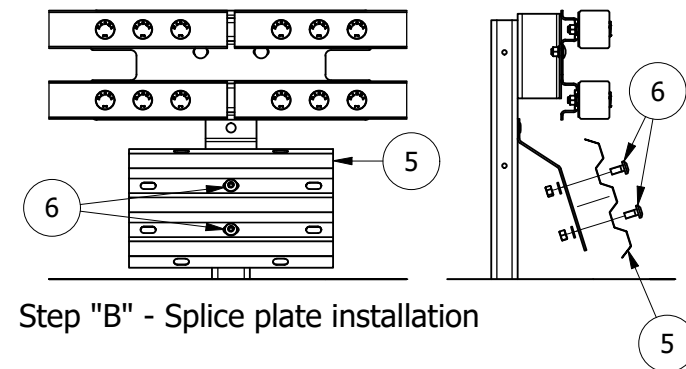
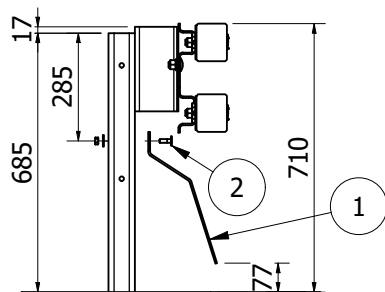


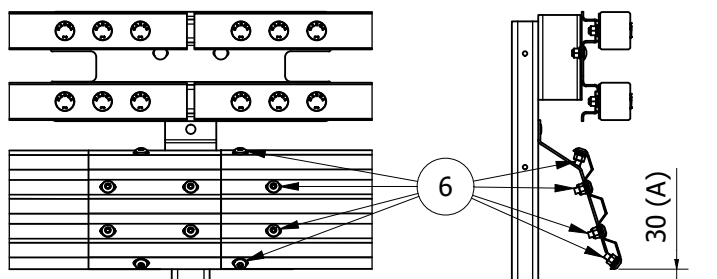
Rimozione di eventuale guscio di rivestimento



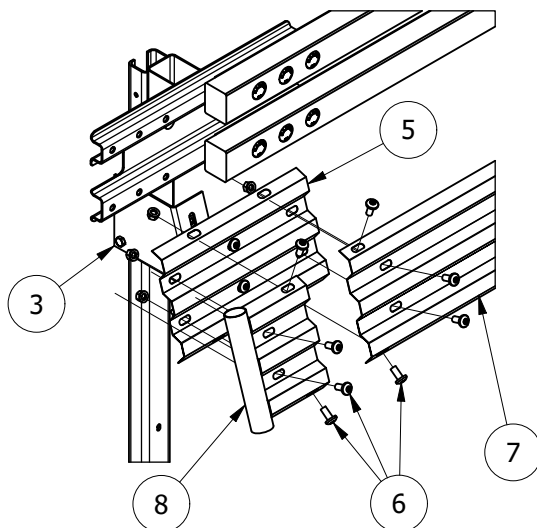
Step "A" - Bracket installation



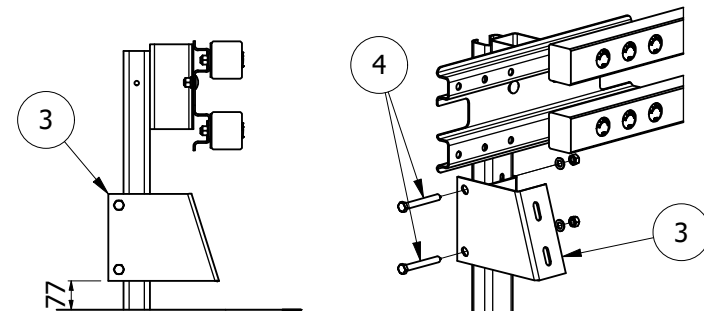
Step "B" - Splice plate installation



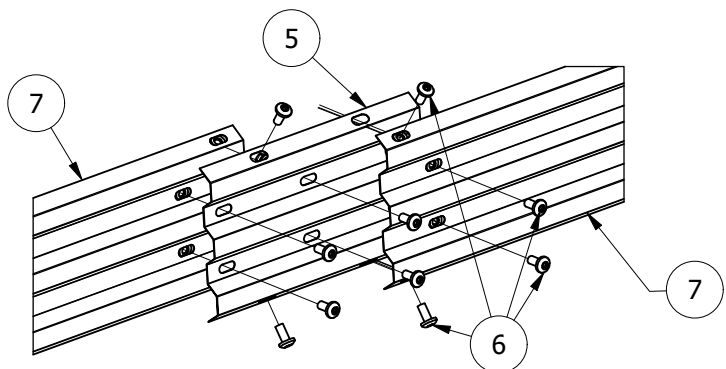
Step "C" - Protection rail installation



Step "D" - Terminal installation



Terminal bracket installation

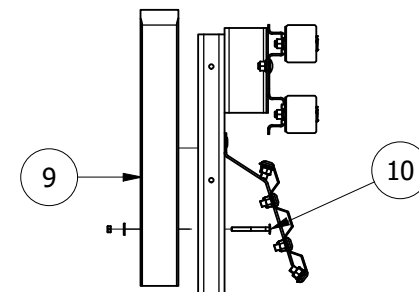


Misure espresse in mm

**Misure fondamentali:** A= altezza da terra del bordo inferiore del DSM

**Bulloni e serraggio:** TT/TE M10x30 classe 8.8 - coppia minima 50 Nm  
 TT M16x35 classe 8.8 - coppia minima 50 Nm  
 TT M16x130 classe 8.8 - coppia minima 50 Nm

Component list	
Ref.	Item
1	Bracket
2	Bolts TT ST class
3	nd Bracket
4	Bolts TE M16x130 class 8.8
5	Corrugated Splice Plate
6	olts TT M16x35 class 8.8
7	Protection rail L= 3840 mm
8	ZILPIQDD
9	Single rear post cover
10	olts S



Riposizionamento guscio di protezione



**MARGARITELLI**  
**ROAD SAFETY**

Drawing IM 027-01 RP	Issued 04/07/2022
Review 00	Date --/--/----

Object: Road Side Safety Barrier N2BL-02  
 Certificate of Costancy of Performance CE n° 0497/CPR/4425  
 with continuous motorcyclist protection system RiderPro-MRS-04  
 Assembly instructions